

APPENDIX G: NONSTRUCTURAL PROJECT DESIGN CHECKLIST

The goal of this checklist is to minimize the increases in stormwater runoff and impacts to water quality resulting from the proposed regulated activity:

1. Prepare an SWM Site Plan (Section 206-21)
2. Establish a stream buffer according to Section 206-17.
3. Prepare a draft project layout avoiding sensitive areas identified in Section 206-21.
4. Identify site-specific existing conditions drainage areas, discharge points, recharge areas, and hydrologic soil groups A and B (areas conducive to infiltration).
5. Evaluate nonstructural stormwater management alternatives (Section 206-16):
 - a) Minimize earth disturbance.
 - b) Minimize clearing operations (vegetation removal)
 - c) Minimize impervious surfaces.
 - d) Break up large impervious surfaces.
6. Provide for groundwater recharge (infiltration) objective water quality protection in accordance with Section 206-14 water volume control requirements.
7. Provide stream bank erosion protection in accordance with Section 206-17 stream bank erosion requirements.
8. Determine into what management district the site falls (Section 206-15) and conduct an existing conditions runoff analysis.
9. Prepare final project design to maintain existing conditions drainage areas and discharge points, to minimize earth disturbance and impervious surfaces, and, to the maximum extent possible, to ensure that the remaining site development has no surface or point discharge.
10. Conduct a proposed conditions runoff analysis based on the final design that meets the management district requirements (Section 206-15).
11. Manage any remaining runoff prior to discharge through detention, bioretention, direct discharge, or other structural control.

APPENDIX H: RIPARIAN BUFFER TRAIL GUIDELINES

[Note to Municipality: The following riparian buffer trail guidelines may be modified provided that the buffer meets all minimum width and vegetation requirements detailed in Section 206-17 of the ordinance as well as all federal, state and local, stormwater, floodplain, and other requirements and regulations.]

INTRODUCTION

Riparian buffers are used as non-structural best management practices (BMPs) for protecting and enhancing water quality. Depending on their size, location, and design, riparian buffers often supply additional environmental, economic, aesthetic, and recreational value. Passive recreational trails can be a compatible use within riparian buffers if the trails are sized and placed appropriately. The trail guidelines below are meant to supplement Section 206-14, Water Volume Control Requirements, and do not alter or modify the regulations set forth in Section 206-11, General Requirements. All other applicable rules and requirements should be followed, including all federal, state, permitting, and local stormwater and floodplain ordinances.

Installing a trail does not relieve a developer or municipality of the minimum buffer and vegetation requirements described in Section 206-17, or infiltration and peak rate controls in Sections 206-14 and 206-15. Effort shall be made to mitigate water quality and peak rate adjacent the trail structure to avoid collecting runoff in a large facility and creating a point discharge. This can be accomplished by trail-side stone filtration trenches, vegetative filter strips, small bio-retention facilities, and other mechanisms subject to site constraints and municipal engineer approval. See Figure 1. In situations where site constraints negate the feasibility of trail-side mitigation methods, effort shall be made to collect runoff in multiple stormwater facilities for segmented portions of the trail, in place of detaining stormwater in one large facility. Level spreaders shall be constructed at facility outlets to decrease point-source discharges.

As with all trails, adequate land acquisition, easements, and/or landowner permission should be obtained in advance of any trail placement. Care should be given when designing and installing trails so as not to compromise the buffer's ability to protect water quality. Many factors such as slope, vegetation, and soil type will determine the type, size, and placement of the trail within the riparian buffer. Heavily used trails and trails with wide impervious surfaces should be set back farther from the stream edge to help mitigate the effects of any associated increase in runoff. Note: failure to comply with these guidelines (installing a trail with inadequate setback from the stream bank) could result in increased stormwater runoff, decreased water quality, stream bank degradation, and damage to the buffer or trail.

TRAIL RECOMMENDATIONS

Location, Size, and Orientation

All trails should be a reasonable width appropriate for the site conditions. It is not recommended that the width of any paved trail exceed twenty five (25) percent of the total buffer width. All trail designs and specifications are subject to approval by the Municipality.

Natural vegetation must be present throughout the buffer as described in Section 206-17 of the ordinance. Grassy areas should be managed as meadows or be reforested and should not be mowed as lawn in any part of the buffer. Where existing vegetation is insufficient to protect water quality, additional native species should be planted to enhance the buffer.

Paved trails, if appropriate to the site, are permitted and must be located at least twenty-five (25) feet from the top of the stream bank. In limited instances, paved trails be placed closer to a stream due to topography, or in order to accommodate passive educational and recreational activities, but must always be at least ten (10) feet from the top of the stream bank. Although this can be achieved by diverting the entire trail closer to the stream, more conservative methods should be considered, such as smaller spur trails or loop trails. These smaller trails provide access to the stream, but reduce the total traffic along the sensitive stream bank.

In rare instances where the buffer width is reduced due to zoning setback or geographical constraints, the municipality should strongly consider whether the benefits of a trail outweigh the benefits of a wider buffer.

Signage

The installation of interpretive and educational signage is strongly encouraged along the trail. Signs should point out local natural resources and educate the public on how riparian buffers protect the watershed. There should be minimum disturbance in the vegetated buffer between the trail and the stream. Therefore, all appurtenances (e.g. benches, educational signs, kiosks, fountains, etc.) should be installed on the landward side of the trail, if possible. All appurtenances shall be installed in compliance with federal, state, local, stormwater, floodplain, and other regulations and permitting requirements (e.g. anchoring, etc.)

Parking Areas

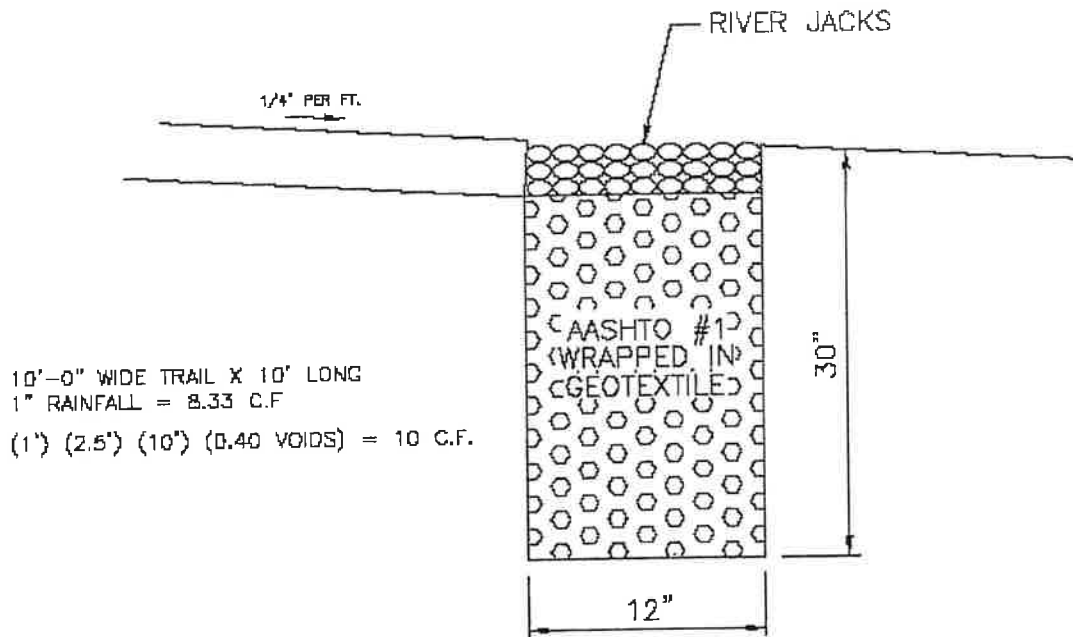
New trailheads and trail parking areas shall meet all the infiltration, rate control, and minimum setback requirements of this ordinance. Every effort should be made to coordinate trail access with existing parking areas. Any new parking areas and trailhead clearings should not encroach on the riparian buffer in any way.

Trail Maintenance

The installation and maintenance of all trails should be performed in a manner that minimizes site disturbance and prevents runoff and erosion. Soil disturbance should be avoided if possible. The removal of native trees and other native vegetation should also be kept to a minimum. If large or heavy equipment is required for trail installation, special care should be given not to damage existing trees and tree roots.

FIGURE 1.

EXAMPLE DESIGN OF A TRAIL-SIDE STONE FILTRATION TRENCH



Source:

James MacCombie, Herbert E. MacCombie Jr. P.E. Consulting Engineers & Surveyors Inc.

APPENDIX G1: REFERENCES

Articles / Books

DeBarry, P.A., Yang, E., Traver, R. G., Newman, B., *Determination of Appropriate Infiltration Requirements For Land Development Using the Water Budget Approach – the Darby – Cobbs Experience.*

Low, D.J., Hippie, D.J., Yannacci, D. (2002). *Geohydrology of Southeastern Pennsylvania.* Water-Resources Investigations Report 00-4166.

Jarrett, A.R. (1995). *Water Management.* Dubuque, Iowa. Kendall/Hunt Publishing Co.

Olmsted, F. H. & Hely, A.G. (1962). *Relation between Ground Water and Surface Water in Brandywine Creek Basin, Pennsylvania.* Geological Survey Professional Paper, 417-A, A-1-A-21

Risser, D. W., Cogner, R. W. Ulrich, J.E., and Asmussen, M.P. (2005). *Estimates of Ground-Water Recharge Based on Streamflow - Hydrograph methods, Pennsylvania.* U.S. Geological Survey Open File Report 1005-1333.

United States Environmental Protection Agency. (rev December 2005). *Stormwater Phase II Final Rule Small MS4 Stormwater Program Review.* Fact Sheet 2.0. EPA 833-F-00-002. <http://www.epa.gov/npdes/pubs/fact2-0.pdf>

Act 167 Plans

Bucks County Planning Commission & Bucks County Conservation District. (1992). *Neshaminy Creek Watershed Stormwater Management Plan, Volume I.*

Bucks County Planning Commission & Montgomery County Planning Commission. (2013). *Neshaminy Creek Watershed Act 167 Stormwater Management Plan (includes Little Neshaminy Creek Watershed).*

Lehigh Valley Planning Commission. (2009). *Perkiomen Creek Headwaters Stormwater Management Plan.*

BMP Manuals

California
California Stormwater BMP Handbook: New Development and Redevelopment (January 2003) – separate file available at <http://www.cabmphandbooks.org/Development.asp>

Georgia
Georgia Stormwater Management Manual Volume 2: Technical Handbook (August 2001) separate file (<http://www.georgiastormwater.com/>)

Maryland
2000 Maryland Stormwater Design Manual –
http://www.mde.state.md.us/Programs/WaterPrograms/SedimentandStormwater/stormwater_design/index.asp

Massachusetts
Stormwater Management, Volume Two: Stormwater Technical Handbook (Massachusetts, 1997) – separate file available at <http://www.mass.gov/dep/water/laws/swmpolv2.pdf>

Minnesota
Minnesota Urban Small Sites BMP Manual: Stormwater Best Management Practices for Cold Climates (July 2001) – <http://www.metrocouncil.org/environment/Watershed/BMP/manual.htm>

New Jersey
STORMWATER Best Management Practices Manual http://www.nj.gov/dep/stormwater/bmp_manual2.htm

New York
New York State Stormwater Management Design Manual (2001) – <http://www.dec.ny.gov/chemical/29072.html>

Pennsylvania
Pennsylvania Stormwater Best Management Practices (2006) –
<http://164.156.71.80/WXOD.aspx?fs=2087d8407c0e00008000071900000719&ft=1>

Washington
Stormwater Management Manual for Western Washington (August 2001) –
<http://www.ecy.wa.gov/programs/wq/stormwater/manual.html>

Federal

Stormwater Best Management Practices in an Ultra-Urban Setting: Selection and Monitoring (FHWA)
<http://www.fhwa.dot.gov/environment/ultraurb/3fs1.htm>

USEPA Infiltration Trench Fact Sheet (September 1999) –
<http://cfpub.epa.gov/npdes/stormwater/menuofbmps/index.cfm>

Riparian Buffer References

Alliance for the Chesapeake Bay, Pennsylvania Department of Environmental Protection, September 2000. *Forest Buffer Toolkit*, Stream ReLeaf Program.

Fike, Jean, June 1999. *Terrestrial & Palustrine Plant Communities of Pennsylvania*, Pennsylvania Natural Diversity Inventory, The Nature Conservancy, Western Pennsylvania Conservancy, and Pennsylvania Department of Conservation and Natural Resources.

Palone, R. S. and A. H. Todd (eds), 1997. *Chesapeake Bay Riparian Handbook: A Guide for Establishing and Maintaining Riparian Forest Buffers*. Chesapeake Bay Program and Northeastern Area State and Private Forestry. Natural Resources Conservation Service Cooperative State Research Education and Extension Services.

Penn State College of Agricultural Sciences, 1996. *Establishing Vegetative Buffer Strips Along Streams to Improve Water Quality*. Publication # AGRS-67.

Pennsylvania Association of Conservation Districts, Inc., Keystone Chapter, Soil and Water Conservation Society, Pennsylvania Department of Environmental Protection, Natural Resources Conservation Service, 1998. *Pennsylvania Handbook of Best Management Practices for Developing Areas*. Prepared by CH2MHill.

The Federal Interagency Stream Restoration Working Group (FISRWG, 10/1998). *Stream Corridor Restoration Principles, Processes, and Practices*. GPO Item No. 0120-A; SuDocs No. A57.6/2:EN3/PT.653. ISBN-0-934213-59-3. Published October 1998. Revised August 2000.

Modeling Data

The SCS Type II rainfall curve ~ National Oceanic and Atmospheric Administration (NOAA) Atlas 14 rain data corresponding to the Doylestown rain gage. This data may be retrieved from the Atlas 14 website:
http://hdsc.nws.noaa.gov/hdsc/pfds/orb/pa_pfds.html

Public Works Operation, Maintenance and Inspection Program

Municipal Storm Water Facilities

The goal of the following O&M program for Montgomery Township is to ensure that storm water management facilities are functioning properly and to prevent or reduce pollutant runoff to the maximum extent practical. All components of the municipal storm sewer collection system will be included in this program. These components include municipal roads, parking lots, or other paved areas; storm sewer inlets, piping and outfalls; swales, ditches or other storm water conveyances; detention/retention basins or other storm water management structures.

Storm Water Facility Operation:

- All municipal storm water facilities will be operated according to their design specifications and in a manner that prevents or reduces adverse environmental or public health and safety impacts.

Storm Water Facility Inspection:

- Inspections will be conducted to evaluate the performance of the storm water facilities and to determine the potential or actual amounts of pollutants, trash and debris entering and discharging from the storm water collection system.
- Inspection frequencies will depend on various factors, but will be at least once a year. The type, size and design of the storm water facility will be used to guide inspection frequencies. The size of the drainage area, the amount of impervious cover, and the type of activities that occur within the drainage area will affect inspection frequencies. More frequent inspections would be warranted in industrial, construction or high vehicle use areas, or in any area that is known or suspected to be an increased risk for pollution. Severe weather conditions such as heavy rains will usually require follow up inspections to determine the impact to and performance of storm water facilities.
- All inspection activities, results and recommendations will be documented in writing.
- The overall condition and cleanliness of Township roads and parking lots will be constantly evaluated during routine travels by Public Works staff. Those areas with excessive staining, trash or sediment will be investigated or scheduled for cleaning. Appropriate corrective actions will be considered for any areas exhibiting flooding or poor drainage patterns.
- All storm sewer inlets/catch basins will be inspected at least annually to determine the sediment load and overall condition of the structure. If the depth of deposits is greater than or equal to one-third the depth from the basin bottom to the invert of the lowest pipe or opening into or out of the basin, cleaning will be scheduled. Catch basins that accumulate deposits quickly will be inspected more frequently and the drainage area will also be inspected to determine possible causes. Inlet grates will be inspected for trash blocking free water entry into the sewer, especially before heavy rains are forecast.
- Storm sewer easements and right-of-ways will be inspected at least annually to check for obstructions or any other conditions that might threaten the integrity of the system.
- Storm sewer outfall structures will be inspected annually to check for structural integrity and erosion potential.
- Township detention/retention basins will be inspected annually to check for sediment accumulation and overall basin conditions. Sediment exceeding 10% of the designed basin depth will trigger sediment removal to the original basin shape and depth. The basin will be inspected for the presence of yard waste or other non-degradable materials. The type and quantity of vegetation will be checked. Basin dikes, berms and

spillways will be examined for structural integrity. The basin will be checked to determine if the trash rack is missing or plugged.

- Other Township storm water conveyances, such as swales, pipes, and ditches, will be inspected on a regular basis to check for trash, vegetation, sediment, and erosion conditions.
- Any other type of Township storm water BMP (e.g. wet pond, vegetated swale, infiltration facility, etc.) will be inspected according to guidelines contained in the Pennsylvania Storm Water Best Management Practices Manual.

Storm Water Facility Maintenance:

- Township roads and parking lots will be cleaned on a regular basis. Those areas identified by inspection as being more debris prone will be prioritized or cleaned more often. Roadway cleaning will occur after the winter deicing season is over in order to remove accumulated materials. Roadway cleaning may also occur under non-deicing conditions when oil spill cleanup materials such as sand or oil dry are applied. This will prevent these oil contaminated materials from being washed into the storm sewer system.
- The storage and application of materials used for roadway deicing or traction control will be in a manner that reduces the impact to the storm sewer system and the environment. Types of materials currently being used in Montgomery Township include sodium chloride (salt). All storage will be protected from precipitation. Any spillage of materials will be cleaned up to prevent storm water runoff contamination. The application of any material to roads or parking lots, such as deicing compounds, will be only enough to accomplish the task and will take into consideration site specific characteristics such as hazardous materials will be used in environmentally sensitive or protected areas.
- Storm sewer inlets/catch basins will be cleaned when inspections reveal an excessive accumulation of sediment or debris. Storm sewer inlet grating will also be cleaned as necessary. Structural repairs to any part of the storm sewer inlet/catch basin will be performed as the need arises. Any storm sewer piping deficiencies will also be corrected. Excessive debris or sediment in any storm sewer piping will be removed. Damaged piping will be replaced.
- Free flow of water from outfalls will be maintained by removal of debris and obstructions. Velocity reducers at outfalls will be maintained or replaced as necessary.
- Detention basin sediment removal will occur when the basin is completely dry. Disturbed areas will be immediately stabilized and re-vegetated. Yard waste or non-degradable waste in a basin will be removed. Spillways and overflows will be maintained to allow for uninterrupted flow. Nuisance or exotic/invasive basin vegetation will be removed. Mowing and/or trimming of vegetation will occur as needed to sustain the basin and all detritus will be removed. Vegetative basin cover will be maintained at 95%. Areas of bare or sparse vegetation will be addressed by soil aerating, conditioning, seeding and mulching, as necessary to restore a proper vegetative cover. Potential basin mosquito problems from unwanted standing water will be addressed by introduction of mosquito predators or by implementation of a pesticide plan.
- Any planned herbicide or pesticide application in a basin or any part of the storm sewer collection system will be reviewed by qualified persons in order to comply with all applicable regulations and to prevent adverse water quality impacts. The use of herbicides and pesticides will be limited as much as possible.
- Any other type of Township storm water BMP (e.g. wet pond, vegetated swale, infiltration facility, etc) will be maintained according to guidelines contained in the Pennsylvania Storm Water Best Management Practices Manual.
- Any materials recovered from any part of the storm sewer collection or treatment system will be handled and disposed of in accordance with all applicable state and federal disposal regulations.
- All maintenance activities will be documented in writing. Pictures will be taken of various storm sewer system components to document pre and post maintenance conditions.

Public Works Vehicle/Equipment Operation and Maintenance Manual

The MS4 Permit requires the development and implementation of a pollution prevention based operation and maintenance program for all municipal vehicle operations. The goal of this program is to reduce or prevent pollutant runoff from municipal operations from adversely impacting the storm sewer system or the environment. The following is the program for Montgomery Township.

Municipal Vehicle Operation:

- All municipal vehicles will be operated in a manner that reduces the potential for pollution to the municipal storm sewer system or to the environment. This includes obeying all road and traffic rules and being alert at all times.
- In the event of a vehicle pollution incident involving either vehicle fluids or cargo, all attempts will be made to prevent the spilled material(s) from entering the storm sewer system or nearby waterways. This could include diking, damming, absorbing, or removing the material from the affected area. All recovered material will be properly disposed of in accordance with all applicable state and federal waste disposal regulations. Appropriate spill containment and recovery equipment will be maintained at the Public Works facility. For any spill beyond the Township's ability to address, local contractors will be contacted to provide assistance. An up to date list of appropriate contractors will be maintained and readily available. A list of other entities to be contacted (PADEP, PA Fish & Boat Commission, water users/intakes, etc.) will also be maintained and available.

Municipal Vehicle Maintenance:

- All vehicle maintenance will be performed indoors to reduce the potential for leaks or spills to impact the storm water system.
- Products of maintenance activities, such as greasy rags, oil filters, air filters, batteries, degreasers, used oil and coolant, etc. will be placed in appropriately labeled containers for proper disposal or recycling. If these containers cannot be stored under roof, they will be placed in secure areas with provisions to prevent releases to the environment.
- Areas containing spillage or contaminants will not be washed so that the runoff could enter the storm sewer system. Dry cleanup methods will be utilized as much as possible.
- Drip pans or containers will be used for all leaking vehicles. Outdoor vehicle storage areas will be periodically inspected to check for evidence of uncontrolled leakage.
- Suitable materials will be maintained on site for the cleanup and disposal of oils, chemicals, or other hazardous materials.
- Indoor floor drains will not be connected to any part of the storm sewer system and will not allow the discharge of pollutants to the environment.
- Non-hazardous cleaners and solvents will be used whenever possible.
- Vehicle storage and maintenance areas will be routinely inspected to determine the effectiveness of the pollution prevention program. Inspection records will be maintained and any deficiencies will be promptly addressed.

Municipal Vehicle Fueling:

- All vehicle fueling operations will be constantly monitored to prevent or react to spillage.
- All underground storage tanks will be operated and maintained according to all applicable local, state or federal requirements. This could include the use of overfill prevention equipment, corrosion protection equipment and spill detection equipment.
- Aboveground storage tanks will be supplied with suitable secondary containment.
- "Topping off" of vehicle fuel tanks will be discouraged through training and signage.
- All spillage from fueling activities will be controlled and cleaned up immediately. Appropriate clean up materials such as oil dry or absorbent pads will be maintained at the fueling area and will be used to prevent spillage from entering the storm drain system. Water will not be used to clean up any spillage.

Municipal Vehicle Fueling:

- Municipal vehicles will be washed at commercial car washes whenever possible.
- If commercial car washes are not viable, designated washing areas will be established, preferably indoors where wash water can be recycled or directed to treatment.
- If outdoor washing occurs, it will be conducted on gravel, grass or other permeable surfaces so that the runoff will not enter the storm sewer system.
- Phosphate-free biodegradable detergents will be used whenever possible.
- If needed, vehicle/equipment wash water will be collected and discharged to the sanitary sewer system.
- The waste water generated from any power washing or steam cleaning activity will not be allowed to enter the storm sewer system.

E-Newsletter sent to 1,909 subscribers
Stormwater Articles- March 10, 2014-March 15, 2016

March 14, 2014- E-News

Leaf & Yard Waste Monthly Drop-Off Tomorrow, March 15th.

We are holding our regular monthly Leaf & Yard Waste Drop-Off tomorrow March 15th from 8:00 a.m. to 12:00 p.m. at the William F. Maule Park at Windlestrae (Main Section/access from Kenas Road). Signs will be posted at the Park entrance to direct residents to the designated drop-off location.

Stormwater Management- The Dirty Truth about Pet Waste!

The Delaware Estuary reminds us that when your pet goes on the lawn, that it doesn't just go on the lawn. Here are some things you can do to minimize pollutants in our waterways and practice safe stormwater management:

1. Scoop up pet waste. As long as the droppings are not mixed with litter or other materials, flush it down the toilet. This is best because then a sewage treatment plant or your septic system treats the pet waste.
2. Bag your pet's waste and put it in the trashcan.
3. Never put pet waste into the storm drain.
4. If your community does not regulate pet waste (e.g. "scooper" law), try to make it a priority of your local governing body.
5. Encourage your neighborhood to provide pet waste stations for collection and disposal of waste. Check to see if the parks in your neighborhood have them.

April 11, 2014- E-News

Receive a Tree..For Free!

(Township Residents Only)

Arbor Day-Saturday, April 26

Celebrate the warm weather by coming out to the Township Building between 9am and noon to get your free tree (for Township residents) to plant in time for spring and summer!

April 17, 2014 E-News

Leaf & Yard Waste Pick-Up and Drop-Off

TOMORROW

Saturday, April 26

Montgomery Township is holding both a yard waste pick-up and drop-off next Saturday, April 26.

Pick-Up: 7 am to 5 pm.

Drop-Off: 8 am to noon at the William F. Maule Park at Windlestrae off of Kenas Road.

Please have all of the leaf & yard waste placed in paper biodegradable leaf bags and out by the curb on the night before the pick-up. If the yard waste is not in a paper biodegradable bag, or does not fit in your paper biodegradable bag, we cannot take it. This also applies to the drop-off.

Receive a Tree..For Free!

(Township Residents Only)

TOMORROW

Arbor Day-Saturday, April 26

Celebrate the warm weather by coming out to the Township Building between 9am and noon tomorrow to get your free tree (for Township residents) to plant in time for spring and summer! Each Montgomery Township household will receive one free tree on a first come first serve basis.

May 9, 2014 E-News

Adult Programs

In addition to our popular kids programs, the Recreation Office also offers many beneficial adult programs. This summer our Environmental Advisory Committee (EAC) is sponsoring two different programs to educate adults on how to better the environment while bettering their lives.

- Top 10 Things a Home Gardner Can Do to Save the Planet
- Dealing with Bugs & Bunnies: Eco-Friendly Pest Management

To view the full list of adult programs, visit www.montgomerytwp.org.

Montgomery Township Municipal Separate Storm Sewer Systems

(MS4) and Stormwater Management

The goals of all MS4s programs and Montgomery Township are to reduce the discharge of pollutants from the township, to protect water quality and to satisfy requirements of the Clean Water Act.

Montgomery Township would like you to remember that the water and any items that go into a storm sewer go directly into streams. This water is not cleaned in any way and does not go to the waste water treatment plant. Montgomery Township needs all of its residents to assist us in keeping our storm water and storm water sewer system clean by doing the following: dispose of water properly, clean up and dispose of pet waste properly, use fertilizers according to manufacturer's guidelines to prevent excess runoff and store materials that could pollute storm water indoors. Also, please monitor storm water inlets near your property. No one should dump anything into the storm sewer system. If you see someone dumping please call the township at 215-393-6900.

May 30, 2014- E-News

Leaf & Yard Waste Drop-Off

TOMORROW

Saturday, May 31

Drop-Off: 8 am to noon at the William F. Maule Park at Windlestrae off of Kenas Road.

Please have all of the leaf & yard waste placed in paper biodegradable leaf bags. If the yard waste is not in a paper biodegradable bag or does not fit in your paper biodegradable bag, we cannot take it.

June 13, 2014- E-News

Leaf & Yard Waste Drop-Off

Saturday, June 21

Drop-Off: 8 am to noon at the William F. Maule Park at Windlestrae off of Kenas Road.

Please have all of the leaf & yard waste placed in paper biodegradable leaf bags. If the yard waste is not in a paper biodegradable bag or does not fit in your paper biodegradable bag, we cannot take it.

A Summertime Stormwater Tip

Outdoor car washing is a standard summertime activity, but may lead to large amounts of dirt, road grime, oil, and heavy metals flowing into waterways. The soapy water used to wash the car flows down the street and into storm drains. Water that enters storm drains travels directly to the nearest streams and creeks without being cleaned.

The best option to keep harmful chemicals from entering our streams is to go to a local car wash. Commercial car wash water is recycled and sent to the wastewater plant for treatment.

When washing your car at home, wash it on your lawn or a pervious (non-paved) surface, so the wash water can soak into the ground and pollutants will be filtered out. Use phosphorous-free soap to decrease the amount of nutrients entering our waterways. Excess nutrients decrease water quality and harm aquatic life.

Make your fundraising car wash watershed friendly! Sell commercial car wash coupons from local car wash companies. This allows you to sell tickets any time of year, expand fundraising beyond one event, and doesn't leave you dependent on the weather.

June 27, 2014- E-News

Leaf & Yard Waste Drop-Off

Saturday, August 16

Drop-Off: 8 am to noon at the William F. Maule Park at Windlestrae off of Kenas Road.

Please have all of the leaf & yard waste placed in paper biodegradable leaf bags. If the yard waste is not in a paper biodegradable bag or does not fit in your paper biodegradable bag, we cannot take it.

July 11, 2014- E-News

Leaf & Yard Waste Drop-Off

Saturday, August 16

Drop-Off: 8 am to 12 pm at the William F. Maule Park at Windlestrae off of Kenas Road.

Please have all of the leaf & yard waste placed in paper biodegradable leaf bags. If the yard waste is not in a paper biodegradable bag or does not fit in your bag, we cannot take it.

10 Reasons to Scoop Your Dog's Poop

By the Department of Conservation and PetFinder.com

1. Stormwater carries pet waste and other pollutants directly into waterways.
2. Animal waste adds nitrogen to the water. Excess nitrogen depletes the oxygen in water necessary for beneficial underwater grasses, wildlife and fish.
3. Animal waste may contain harmful organisms such as Giardia, Salmonella and E. coli that can be transmitted to humans and other animals by ingesting contaminated water.

4. Roundworms and hookworms deposited by infected animals can live in the soil for long periods of time and be transmitted to other animals and humans.
5. It's the law! Many urban and suburban areas require you to pick up after your pet. Even if there is no restriction, cleaning up after your pet is always the right thing to do.
6. Joining the growing number of responsible pet owners may encourage hotel managers to accept pets when you are traveling and help keep fees to a minimum.
7. No one likes to step in pet waste and spread it into homes, cars and businesses.
8. Scooping on a daily basis and applying lime will help prevent odors.
9. It's easy to clean up by carrying plastic baggies and paper towels in your pocket. The baggies can be secured and thrown away in the garbage.
10. Your neighbors will appreciate your good manners.

July 25, 2014- E-News

Leaf & Yard Waste Drop-Off

Saturday, August 16

Drop-Off: 8 am to 12 pm at the William F. Maule Park at Windlestrae off of Kenas Road.

Please have all of the leaf & yard waste placed in paper biodegradable leaf bags. If the yard waste is not in a paper biodegradable bag or does not fit in your bag, we cannot take it.

August 8, 2014- E-News

Leaf & Yard Waste Drop-Off

Saturday, August 16

Drop-Off: 8am to 12pm at the William F. Maule Park at Windlestrae off of Kenas Road.

Please have all of the leaf & yard waste placed in paper biodegradable leaf bags. If the yard waste is not in a paper biodegradable bag or does not fit in your bag, we cannot take it.

The Use of Rain Barrels for Stormwater Management

One way you and your family can continue to Reduce, Reuse and Recycle is to use Rain Barrels. Rain Barrels capture and store rain, making it available for water gardens, washing cars, and other activities that you would use your hose for.

National Geographic boasts the benefits from Rain Barrels include:

Money Saver: Rain barrels save homeowners money on their water bills. Garden and lawn irrigation accounts for 40 percent of residential water use during the summer, according to the U.S. Environmental Protection Agency. By using rain barrels, homeowners can save 1,300 gallons of water during the growing season. Healthy Plants & Soils: Rainwater does not contain the same additives found in tap water. It benefits plants in your garden by cleaning the soil of salt buildup, thereby promoting an environment conducive to root development. Reductions of Runoff: Rain barrels can help reduce the flow of storm runoff. When it rains, runoff picks up soil, fertilizer, oil, pesticides and other contaminants from hard surfaces and landscapes. Rain barrels capture water that would have swept over a paved surface or lawn, thereby minimizing runoff pollutants. There are many different websites that offer rain barrel assembly instructions. Simply type in "rain barrel assembly" into your search bar to find the many helpful websites.

August 22, 2014- E-News

Leaf & Yard Waste Drop-Off

Saturday, September 13 (please note rescheduled to the 2nd Saturday due to Township's Community Day on September 20th)

Drop-Off: 8am to 12pm at the William F. Maule Park at Windlestrae off of Kenas Road. **Please have all of the leaf & yard waste placed in paper biodegradable leaf bags. If the yard waste is not in a paper biodegradable bag or does not fit in your bag, we cannot take it.**

September 5, 2014- E-News

Swimming Pool and Spa Reminder

Now that Labor Day Weekend is over and summer is coming to an end, it is time to start winterizing your swimming pools and spas. Remember that you may only drain your swimming pool when a test kit does not detect chlorine levels. When your pool or spa water is chlorine-free, drain your pool or spa into your yard being careful not to drain the water towards or onto your neighbor's property. Finally, please store pool and spa chemicals in areas that will prevent leaks and spills.

September 26, 2014- E-news

Leaf & Yard Waste Drop-Off

Saturday, October 18

Drop-Off: 8am to 12pm at the William F. Maule Park at Windlestrae off of Kenas Road.

Please have all of the leaf & yard waste placed in paper biodegradable leaf bags. If the yard waste is not in a paper biodegradable bag or does not fit in your bag, we cannot take it.

Swimming Pool and Spa Reminder

It's time to start winterizing your swimming pools and spas.

Remember that you may only drain your swimming pool when a test kit does not detect chlorine levels. When your pool or spa water is chlorine-free, drain your pool or spa into your yard being careful not to drain the water towards or onto your neighbor's property. Finally, please store pool and spa chemicals in areas that will prevent leaks and spills.

October 10, 2014- E-News

Leaf & Yard Waste Drop-Off

Saturday, October 18

Drop-Off: 8am to 12pm at the William F. Maule Park at Windlestrae off of Kenas Road.

Please have all of the leaf & yard waste placed in paper biodegradable leaf bags. If the yard waste is not in a paper biodegradable bag or does not fit in your bag, we cannot take it.

October 24, 2014- E-News

Electronics Recycling Event This Saturday!

Montgomery County is holding an Electronics Recycling Event this Saturday, October 25th at Upper Merion Middle School (435 Crossfield Road, King of Prussia, PA 19406) from 9 a.m. to 3 p.m.

Please click [here](#) to view details and acceptable event items.

Leaf & Yard Waste Curbside Pick-Up & Drop-Off!

Saturday, November 15th

Curbside Pick-Up: 7 a.m. to 5 p.m.- Please have all of the leaf & yard waste placed in paper biodegradable leaf bags and out by the curb on the night before the pick-up. If the yard waste is not in a paper biodegradable bag, or does not fit in your bag, we cannot take it.

Drop-Off: 8 a.m. to 12 p.m. at the William F. Maule Park at Windlestrae off of Kenas Road.

Please have all of the leaf & yard waste placed in paper biodegradable leaf bags. If the yard waste is not in a paper biodegradable bag or does not fit in your bag, we cannot take it.

Got Campaign Signs?- Recycle Them After The Election!

Drop off your Campaign Signs from November 5th through November 12th at the Montgomery Township building or at participating locations.

'Fall' into Better Stormwater Management Practices

As Autumn approaches, it is important to keep storm drains clear and clean. The water that runs into storm drain systems is untreated and goes straight into our streams and creeks.

In order to keep drains clear, remember not to blow grass clippings or leaves into the street. Instead, bag them up for disposal or compost your leaves or grass clippings. Additionally, sweep up yard debris instead of hosing down paved areas in order to prevent debris from running into storm sewers. The debris can carry fertilizers and pesticides from your yard and deposit them in streams and neighboring creeks.

In addition to fall foliage and clippings, please keep storm drains free of household hazardous waste, fertilizers and pesticides, motor oil and other vehicle fluids, and pet waste.

November 11, 2014- E-News

Got Campaign Signs?- Recycle Them At The Township Building!

Drop off your campaign signs from November 5th through November 12th at the Montgomery Township building parking lot or at participating locations.

Leaf & Yard Waste Curbside Pick-Up & Drop-Off!

Saturday, November 15th

Curbside Pick-Up: 7 a.m. to 5 p.m.- Please have all of the leaf & yard waste placed in paper biodegradable leaf bags and out by the curb on the night before the pick-up. If the yard waste is not in a paper biodegradable bag, or does not fit in your bag, we cannot take it.

Drop-Off: 8 a.m. to 12 p.m. at the William F. Maule Park at Windlestrae off of Kenas Road.

Please have all of the leaf & yard waste placed in paper biodegradable leaf bags. If the yard waste is not in a paper biodegradable bag or does not fit in your bag, we cannot take it.

Ways to Plan, Prepare & Prevent Stormwater Runoff on Your Property

Excessive and swift moving stormwater runoff can overload and pollute small waterways, flood basements and streets, and destroy property. The ground cannot absorb this abundance of

water, so it flows to where it can, down paved surfaces and into creeks, streams, and ultimately the ocean.

eHow.com presents six helpful tips that you can do as a homeowner to prevent stormwater runoff:

(1) When it is raining heavily, go outside and watch where the rainwater flows over your property. Make a schematic that shows the path the water takes. Note which way it goes as it flows over paved areas, the yard, and planted areas.

(2) Note where water stands in puddles or is not absorbed quickly into the ground. Look for places stormwater runs off on to your land from other places. Look to see where the water is headed. Does it run in to the street or sewer? Does it find a low point to stand, creating a water ditch? Does it go into a pond or stream? Return to the yard on a dry day with the schematic you have made during the storm. Find the areas you noted. Make a plan to improve absorption of water in these areas.

(3) Aerate soil and plant grass, or other ground cover, on areas that are bare so that the water will slow down in these areas and absorb more quickly. Also plant areas that show erosion. This is made by the hard flow of stormwater. Slow it down with planting and mulching, and packing straw bales into eroded patches. Consult a landscape specialist if the erosion is extreme. He/she may advise a diversion ditch or silt fence to slow the water and halt erosion.

(4) Replace paved surfaces with gravel, or other porous material. Use pebbles or wood chips on pathways instead of paving them. Do not pave more areas on your property, such as terraces. The stormwater cannot find its way into the ground where there is pavement.

(5) Plant bushes or shrubs at the low-lying points on your property. Introduce plants at the bottom of slopes to prevent runoff into the streets or onto a neighbor's property. Terrace slopes and hills to prevent erosion and slow stormwater runoff.

(6) Check the downspouts from the gutters on your roof. Make sure they do not flow onto concrete. This will prevent the water from soaking into grass and then into the ground. Put down gravel, plant groundcover, or mulch around the drip line of the roof to increase water absorption.

November 21, 2014- E-News

Leaf & Yard Waste Drop-Off!

Saturday, December 20th

Drop-Off: 8 a.m. to 12 p.m. at the William F. Maule Park at Windlestrae off of Kenas

Road.

Please have all of the leaf & yard waste placed in paper biodegradable leaf bags.

If the yard waste is not in a paper biodegradable bag or does not fit in your bag, we cannot take it.

Recycling Locations, Permit Information, and More!

Learn all about the Township's permits, events, services, committees, parks, and programs by [clicking here](#) to view the Fall/Winter 2014 Community Guide.

Please support our sponsors who support the Community Guide. Thank you.

December 15, 2014- E-News

Leaf & Yard Waste Drop-Off!

Saturday, December 20th

Drop-Off: 8 a.m. to 12 p.m. at the William F. Maule Park at Windlestrae off of Kenas Road.

Please have all of the leaf & yard waste placed in paper biodegradable leaf bags. If the yard waste is not in a paper biodegradable bag or does not fit in your bag, we cannot take it.

December 19, 2014- E-News

Leaf & Yard Waste Drop-Off This Saturday

Saturday, December 20th

Drop-Off: 8 a.m. to 12 p.m. at the William F. Maule Park at Windlestrae off of Kenas Road.

Please have all of the leaf & yard waste placed in paper biodegradable leaf bags. If the yard waste is not in a paper biodegradable bag or does not fit in your bag, we cannot take it.

January 2, 2015- E-News

Recycle Your Christmas Tree!

The Montgomery Township Public Works Department is accepting used Christmas trees for recycling at the William F. Maule Park at Windlestrae. The entrance to the park is located off of Kenas Road. There will be signs to guide you to the tree recycle location.

Leaf & Yard Waste Drop-Off on Saturday, January 17th

Drop-Off: 8 a.m. to 12 p.m. at the William F. Maule Park at Windlestrae off of Kenas Road.

Please have all of the leaf & yard waste placed in paper biodegradable leaf bags. If the yard waste is not in a paper biodegradable bag or does not fit in your bag, we cannot take it.

The 411 on Using Deicers

When inclement weather hits, go green when trying to control ice. The key is to prevent slipping on ice with environmentally-friendly resources. Excess salt and other deicing chemicals can pollute our streams and adversely impact drinking water supplies. Please remember to:

- Shovel snow before it turns to ice to limit the need for deicing chemicals, like rock salt.
- Shovel snow onto permeable surfaces including grass, flower beds, and level landscaping so that as the snow melts, it will soak into the ground rather than flow directly into a nearby storm drain or stream.

If you must use deicing chemicals, consider the following:

- Avoid over application by controlling the application of chemical deicers.
- Limit chemical applications near environmentally-sensitive areas including springs, streams, ponds, wetlands, and water supply areas and sensitive landscape and vegetation.
- Sand, sawdust and cracked corn can be used as an environmentally-friendly alternative to commonly used salt products.
- Use salt substitutes that are less harmful including Calcium Chloride (CaCl₂) and Calcium Magnesium Acetate (CMA). For Calcium Chloride pellets, a handful for every 3 square yards is adequate.
- For larger areas, apply salt as a brine solution to prevent drift off of paved surfaces.
- After snow-melt, sweep up residues, including sand, to prevent it from washing into storm drains and streams.

January 16, 2015- E-News

Leaf & Yard Waste Drop-Off Tomorrow!

Saturday, January 17th

Drop-Off: 8 a.m. to 12 p.m. at the William F. Maule Park at Windlestrae off of Kenas Road.

Please have all of the leaf & yard waste placed in paper biodegradable leaf bags. If the yard waste is not in a paper biodegradable bag or does not fit in your bag, we cannot take it.

Recycle Your Christmas Tree

The Montgomery Township Public Works Department is accepting used Christmas trees for recycling at the William F. Maule Park at Windlestrae. The entrance to the park is located off of Kenas Road. There will be signs to guide you to the tree recycle location.

January 30, 2015- E-News

Next Leaf & Yard Waste Drop-Off

Saturday, February 21st

Drop-Off: 8 a.m. to 12 p.m. at the William F. Maule Park at Windlestrae off of Kenas Road.

Please have all of the leaf & yard waste placed in paper biodegradable leaf bags. If the yard waste is not in a paper biodegradable bag or does not fit in your bag, we cannot take it.

New Recycling Information!

Presented by Montgomery Township's Environmental Advisory Committee

New items have been added to what can be included in Montgomery Township curbside recycling.

Please keep yourself up to date on what can and cannot be recycled by [clicking here](#).

Thank you for your support.

February 13, 2015- E-News

2015 Montgomery County Recycling Events

Listed below are the Montgomery County recycling events for 2015. Any questions regarding Montgomery County's recycling events should be directed to Montgomery County Recycling at 610-278-3618. For more recycling information [click here](#).

Next Leaf & Yard Waste Drop-Off

Saturday, February 21st

Drop-Off: 8 a.m. to 12 p.m. at the William F. Maule Park at Windlestrae off of Kenas Road.

Please have all of the leaf & yard waste placed in paper biodegradable leaf bags. If the yard waste is not in a paper biodegradable bag or does not fit in your bag, we cannot take it.

Curbside Recycling Update!

Presented by Montgomery Township's Environmental Advisory Committee

New items have been added to what can be included in Montgomery Township curbside recycling.

Please keep yourself up to date on what can and cannot be recycled by [clicking here](#).

Thank you for your support.

February 26, 2015 E-News

Get Ready For Spring Cleaning!

Montgomery County is offering household hazardous waste collections, tire collections and paper shredding events for 2015.

Any questions regarding Montgomery County's recycling events should be directed to Montgomery County Recycling at 610-278-3618. For more recycling information [click here](#).

Next Leaf & Yard Waste Drop-Off

Saturday, March 21st

Drop-Off: 8 a.m. to 12 p.m. at the William F. Maule Park at Windlestrae off of Kenas Road.

Please have all of the leaf & yard waste placed in paper biodegradable leaf bags. If the yard waste is not in a paper biodegradable bag or does not fit in your bag, we cannot take it.

Curbside Recycling Update!

Presented by Montgomery Township's Environmental Advisory Committee

New items have been added to what can be included in Montgomery Township curbside recycling.

Please keep yourself up to date on what can and cannot be recycled by [clicking here](#).

Thank you for your support.

March 13, 2016- E-News

Get Ready To Recycle!

Montgomery County is offering household hazardous waste collections, tire collections and paper shredding events for 2015. Any questions regarding Montgomery County's recycling events should be directed to Montgomery County Recycling at 610-278-3618. [For more recycling information click here](#).

Next Leaf & Yard Waste Drop-Off

Saturday, March 21st

Drop-Off: 8 a.m. to 12 p.m. at the William F. Maule Park at Windlestrae off of Kenas Road.

Please have all of the leaf & yard waste placed in paper biodegradable leaf bags. If the yard waste is not in a paper biodegradable bag or does not fit in your bag, we cannot take it.

PET WASTE FACTS

The Delaware Estuary reminds us that when your pet goes on the lawn, it doesn't just go on the lawn.

Here are some things you can do to minimize pollutants in our waterways and practice safe stormwater management:

1. Scoop up pet waste. As long as the droppings are not mixed with litter or other materials, flush it down the toilet. This is best because a sewage treatment plant or your septic system treats the pet waste.
2. Bag your pet's waste and put it in the trashcan.
3. Never put pet waste into the storm drain.
4. If your community does not regulate pet waste (e.g. "scooper" law), try to make it a priority of your local governing body.
5. Encourage your neighborhood to provide pet waste stations for collection and disposal of waste. Check to see if the parks in your neighborhood have them.

March 27, 2015- E-News

Get Ready To Recycle!

Montgomery County is offering household hazardous waste collections, tire collections and paper shredding events for 2015. Any questions regarding Montgomery County's recycling events should be directed to Montgomery County Recycling at 610-278-3618. [For more recycling information click here.](#)

Leaf & Yard Waste Spring Curbside Pick-Up & Drop-off!

Saturday, April 18

Leaf & Yard Waste Curbside Pick-up: There are two curbside pick-ups, one in the spring (April 18) and one in the fall (November 21). Please have all of the leaf & yard waste placed in paper

biodegradable leaf bags and out by the curb on the night before the pick-up. Pick-up is from 7 a.m. to 5 p.m.

Drop-Off: 8 a.m. to 12 p.m. at William F. Maule Park at Windlestrae off of Kenas Road

Please have all of the leaf & yard waste placed in paper biodegradable leaf bags. If the yard waste is not in a paper biodegradable bag or does not fit in your bag, we cannot take it.

Arbor Day Tree Giveaway

Township Residents Only

Celebrate the spring season by coming out to the Township Building Gazebo Park to receive a free tree for your home!

WHEN: Saturday, April 25

TIME: 9 a.m. to 12 p.m.

WHERE: Montgomery Township Building Gazebo Park

April 17, 2015 E-News

Leaf & Yard Waste Spring Curbside Pick-Up & Drop-off- TOMORROW!

Saturday, April 18

Leaf & Yard Waste Curbside Pick-up: There are two curbside pick-ups, one in the spring (April 18) and one in the fall (November 21). Please have all of the leaf & yard waste placed in paper biodegradable leaf bags and out by the curb on the night before the pick-up. Pick-up is from 7 a.m. to 5 p.m.

Drop-Off: 8 a.m. to 12 p.m. at William F. Maule Park at Windlestrae off of Kenas Road

Please have all of the leaf & yard waste placed in paper biodegradable leaf bags. If the yard waste is not in a paper biodegradable bag or does not fit in your bag, we cannot take it.

Household Hazardous Waste Collection- TOMORROW!

WHERE: Indian Valley Middle School (130 Maple Avenue, Harleysville, PA 19483)

WHEN: Saturday, April 18

TIME: 9 a.m. to 3 p.m.

Earth Day 2015

April 22, 2015

Montgomery Township encourages you to celebrate Earth Day!

The concept is simple: Give the earth an act of service.

See what you can do below:

- Plant trees
- Pick up roadside trash
- Conduct various recycling programs
- Use recyclable containers for snacks and lunches

Please give an act of service and spread the word!

Arbor Day Tree Giveaway

Township Residents Only

Celebrate the spring season by coming out to the Township Building Gazebo Park to receive a free tree for your home!

WHERE: Montgomery Township Building Gazebo Park

WHEN: Saturday, April 25

TIME: 9 a.m. to 12 p.m.

May 1, 2015- E-News

Arbor Day Tree Giveaway- Another Successful Spring Day

Montgomery Township thanks all of the residents, volunteers, and staff who helped make Arbor Day such a fun and special spring event last Saturday, April 25th.

Leaf & Yard Waste Drop-off

Saturday, May 16

Drop-Off: 8:00 a.m. to 12:00 p.m. at William F. Maule Park at Windlestrae off of Kenas Road

Please have all of the leaf & yard waste placed in paper biodegradable leaf bags. If the yard waste is not in a paper biodegradable bag or does not fit in your bag, we cannot take it.

Spring/Summer Recycling Events!

Montgomery County holds household hazardous waste collections, tire collections, and paper shredding events throughout the spring, summer, and fall.

[Please click here to view dates, locations, and recycling information.](#) Questions can be directed to Montgomery County at 610-278-3618.

Montgomery Township Municipal Separate Storm Sewer Systems (MS4) and Stormwater Management

The goals of all MS4s programs and Montgomery Township are to reduce the discharge of pollutants from the township, to protect water quality and to satisfy requirements of the Clean Water Act.

Montgomery Township would like you to remember that the water and any items that go into a storm sewer go directly into streams.

This water is not cleaned in any way and does not go to the waste water treatment plant. Montgomery Township needs all of its residents to assist us in keeping our storm water and storm water sewer system clean by doing the following: dispose of water properly, clean up and dispose of pet waste properly, use fertilizers according to manufacturer's guidelines to prevent excess runoff and store materials that could pollute storm water indoors.

Also, please monitor storm water inlets near your property. No one should dump anything into the storm sewer system. If you see someone dumping please call the township at 215-393-6900.

May 15, 2015- E-News

Leaf & Yard Waste Drop-off- TOMORROW!

Saturday, May 16

Drop-Off: 8:00 a.m. to 12:00 p.m. at William F. Maule Park at Windlestrae off of Kenas Road
Please have all of the leaf & yard waste placed in paper biodegradable leaf bags. If the yard waste is not in a paper biodegradable bag or does not fit in your bag, it cannot be accepted.

Spring/Summer Recycling Events!

Montgomery County holds household hazardous waste collections, tire collections, and paper shredding events throughout the spring, summer, and fall.

Upcoming recycling event:

Household Hazardous Waste Collection-

Saturday, May 30

Montgomery County Community College

340 DeKalb Pike, Blue Bell, PA 19422

9 a.m. to 3 p.m.

May 29, 2015- E-News

Household Hazardous Waste Collection- TOMORROW!

Montgomery County holds household hazardous waste collections, tire collections, and paper shredding events throughout the spring, summer, and fall.

Upcoming recycling event:
Household Hazardous Waste Collection-
Saturday, May 30
Montgomery County Community College
340 DeKalb Pike, Blue Bell, PA 19422
9 a.m. to 3 p.m.

Questions can be directed to Montgomery County at 610-278-3618.

Next Leaf & Yard Waste Drop-off

Saturday, June 20

Drop-Off: 8:00 a.m. to 12:00 p.m. at William F. Maule Park at Windlestrae off of Kenas Road
Please have all of the leaf & yard waste placed in paper biodegradable leaf bags. If the yard waste is not in a paper biodegradable bag or does not fit in your bag, it cannot be accepted.

June 10, 2015- E-News

Next Leaf & Yard Waste Drop-off

Saturday, June 20th

Drop-Off: 8:00 a.m. to 12:00 p.m. at William F. Maule Park at Windlestrae off of Kenas Road
Please have all of the leaf & yard waste placed in paper biodegradable leaf bags. If the yard waste is not in a paper biodegradable bag or does not fit in your bag, it cannot be accepted.

A Summertime Stormwater Tip

Outdoor car washing is a standard summertime activity but may lead to large amounts of dirt, road grime, oil, and heavy metals flowing into waterways.

The soapy water used to wash the car flows down the street and into storm drains. Water that enters storm drains travels directly to the nearest streams and creeks without being cleaned.

The best option to keep harmful chemicals from entering our streams is to go to a local car wash. Commercial car wash water is recycled and sent to the wastewater plant for treatment.

When washing your car at home, wash it on your lawn or a pervious (non-paved) surface, so the wash water can soak into the ground and pollutants will be filtered out. Use phosphorous-free soap to decrease the amount of nutrients entering our waterways. Excess nutrients decrease water quality and harm aquatic life.

Make your fundraising car wash watershed friendly! Sell commercial car wash coupons from local car wash companies. This allows you to sell tickets any time of year, expand fundraising beyond one event, and doesn't leave you dependent on the weather.

June 26, 2015- E-News

Tire Collection- Tomorrow!

Montgomery County holds household hazardous waste collections, tire collections, and paper shredding events throughout the spring, summer, and fall.

Upcoming recycling event:

Tire Collection- Saturday, June 27

Pottstown Senior High School

750 North Washington Street, Pottstown, PA 19464

9 a.m. to 3 p.m.

Questions can be directed to Montgomery County at 610-278-3618.

Next Leaf & Yard Waste Drop-off

Saturday, July 18th

Drop-Off: 8:00 a.m. to 12:00 p.m. at William F. Maule Park at Windlestrae off of Kenas Road

Please have all of the leaf & yard waste placed in paper biodegradable leaf bags. If the yard waste is not in a paper biodegradable bag or does not fit in your bag, it cannot be accepted.

July 16, 2015- E-News

Next Leaf & Yard Waste Drop-off- Tomorrow!

Saturday, July 18th

Drop-Off: 8:00 a.m. to 12:00 p.m. at William F. Maule Park at Windlestrae off of Kenas Road

Please have all of the leaf & yard waste placed in paper biodegradable leaf bags. If the yard waste is not in a paper biodegradable bag or does not fit in your bag, it cannot be accepted.

Household Hazardous Waste & Paper Shredding

Below are the upcoming recycling events being hosted by Montgomery County.

Household Hazardous Waste- Saturday, August 8th

Abington Junior High School

2056 Susquehanna Road

Abington, PA 19001

All household hazardous waste events are held from 9:00 a.m. to 3:00 p.m.

Paper Shredding- Saturday, August 15th

Abington Junior Highschool

2056 Susquehanna Road

Abington, PA 19001

All paper shredding events are held from 9:00 a.m. to 12:00 p.m.

Questions can be directed to Montgomery County at 610-278-3618.

August 13, 2015- E-News

Next Leaf & Yard Waste Drop-off- This Saturday!

Saturday, August 15

Drop-Off: 8:00 a.m. to 12:00 p.m. at William F. Maule Park at Windlestrae off of Kenas Road
Please have all of the leaf & yard waste placed in paper biodegradable leaf bags. If the yard waste is not in a paper biodegradable bag or does not fit in your bag, it cannot be accepted.

Paper Shredding Event- This Saturday!

Below are the upcoming recycling events being hosted by Montgomery County.

Paper Shredding- Saturday, August 15th
Abington Junior High School
2056 Susquehanna Road
Abington, PA 19001

All paper shredding events are held from 9:00 a.m. to 12:00 p.m.

Questions can be directed to Montgomery County at 610-278-3618.

Recycle Right!

This message is being brought to you by the Montgomery Township Environmental Advisory Committee:

We're proud that each year millions of Americans recycle. While the shift toward single stream recycling makes recycling incredibly easy (single stream = all items going into one bin or cart), it also means people mix in items that cannot be recycled with those that can.

The result: each year environmental service providers and local governments spend millions of dollars removing items (also called contaminants) that shouldn't be in the recycling stream or they must discard overly contaminated items that could have been recycled.

[Help better the environment and click here to learn what you can and cannot recycle.](#)

August 28, 2015- E-News

Next Leaf & Yard Waste Drop-off

Saturday, September 19th

Drop-Off: 8:00 a.m. to 12:00 p.m. at William F. Maule Park at Windlestrae off of Kenas Road

Please have all of the leaf & yard waste placed in paper biodegradable leaf bags. If the yard waste is not in a paper biodegradable bag or does not fit in your bag, it cannot be accepted.

Recycling Requirements

Recycling is required in Montgomery Township.

Montgomery Township requires that residents, commercial establishments, and non-residential establishments recycle all recyclable materials.

Commonly recycled materials include:

Paper – newspaper, office/copy paper, glossy paper, color paper, cardboard, junk mail, phone books, cereal/cracker boxes

Plastic – bottles and jugs No. 1-7

Glass – clear, green and brown containers

Metal – aluminum, steel, tin, and bimetal cans and containers

You should check with your hauler for a complete list of accepted recyclable materials.

Paper Shredding & Household Hazardous Waste Events

Paper Shredding

Sunday, October 4

9:00 a.m. to 12:00 p.m.

Lower Merion Transfer Station (1300 North Woodbine Avenue, Penn Valley, PA 19072)

Household Hazardous Waste

Sunday, October 18

9:00 a.m. to 3:00 p.m.

Lower Merion Transfer Station (1300 North Woodbine Avenue, Penn Valley, PA 19072)

Swimming Pool and Spa Reminder

It's time to start winterizing your swimming pools and spas.

Remember that you may only drain your swimming pool when a test kit does not detect chlorine levels. When your pool or spa water is chlorine-free, drain your pool or spa into your yard, being careful not to drain the water towards or onto your neighbor's property. Finally, please store pool and spa chemicals in areas that will prevent leaks and spills.

October 9, 2015- E-News

Next Leaf & Yard Waste Drop-off

Saturday, October 17th

Drop-Off: 8:00 a.m. to 12:00 p.m. at William F. Maule Park at Windlestrae off of Kenas Road

Please have all of the leaf & yard waste placed in paper biodegradable leaf bags. If the yard waste is not in a paper biodegradable bag or does not fit in your bag, it cannot be accepted.

Recycling Requirements

Recycling is required in Montgomery Township.

Montgomery Township requires that residents, commercial establishments, and non-residential establishments recycle all recyclable materials.

Commonly recycled materials include:

Paper – newspaper, office/copy paper, glossy paper, color paper, cardboard, junk mail, phone books, cereal/cracker boxes

Plastic – bottles and jugs No. 1-7

Glass – clear, green and brown containers

Metal – aluminum, steel, tin, and bimetal cans and containers

You should check with your hauler for a complete list of accepted recyclable materials.

Household Hazardous Waste Collection

Household Hazardous Waste

Sunday, October 18

9:00 a.m. to 3:00 p.m.

Lower Merion Transfer Station (1300 North Woodbine Avenue, Penn Valley, PA 19072)

October 16, 2015- E-News

Next Leaf & Yard Waste Drop-off- TOMORROW!

Saturday, October 17th

Drop-Off: 8:00 a.m. to 12:00 p.m. at William F. Maule Park at Windlestrae off of Kenas Road

Please have all of the leaf & yard waste placed in paper biodegradable leaf bags. If the yard waste is not in a paper biodegradable bag or does not fit in your bag, it cannot be accepted.

Household Hazardous Waste Collection

THIS WEEKEND!

Household Hazardous Waste

Sunday, October 18

9:00 a.m. to 3:00 p.m.

Lower Merion Transfer Station (1300 North Woodbine Avenue, Penn Valley, PA 19072)

October 28, 2015 E-News

Next Leaf & Yard Waste Drop-off and Pick-up

Saturday, November 21st

Curbside Pick-Up: 7 a.m. to 5 p.m.- Please have all of the leaf & yard waste placed in paper biodegradable leaf bags and out by the curb on the night before the pick-up. If the yard waste is not in a paper biodegradable bag, or does not fit within the bag, it cannot be accepted.

Drop-Off: 8:00 a.m. to 12:00 p.m. at William F. Maule Park at Windlestrae off of Kenas Road
Please have all of the leaf & yard waste placed in paper biodegradable leaf bags. If the yard waste is not in a paper biodegradable bag or does not fit in your bag, it cannot be accepted.

'Fall' into Better Stormwater Management Practices

As Autumn approaches, it is important to keep storm drains clear and clean. The water that runs into storm drain systems is untreated and goes straight into our streams and creeks. In order to keep drains clear, remember not to blow grass clippings or leaves into the street. Instead, bag them up for disposal or compost your leaves or grass clippings.

Additionally, sweep up yard debris instead of hosing down paved areas in order to prevent debris from running into storm sewers. The debris can carry fertilizers and pesticides from your yard and deposit them in streams and neighboring creeks.

In addition to fall foliage and clippings, please keep storm drains free of household hazardous waste, fertilizers and pesticides, motor oil and other vehicle fluids, and pet waste.

November 13, 2015- E-News

Next Leaf & Yard Waste Drop-off and Pick-up

Saturday, November 21st

Curbside Pick-Up: 7 a.m. to 5 p.m.- Please have all of the leaf & yard waste placed in paper biodegradable leaf bags and out by the curb on the night before the pick-up. If the yard waste is not in a paper biodegradable bag, or does not fit within the bag, it cannot be accepted.

Drop-Off: 8:00 a.m. to 12:00 p.m. at William F. Maule Park at Windlestrae off of Kenas Road
Please have all of the leaf & yard waste placed in paper biodegradable leaf bags. If the yard waste is not in a paper biodegradable bag or does not fit in your bag, it cannot be accepted.

November 20, 2015- E-News

Fall Leaf & Yard Waste Pick-Up TOMORROW!

Saturday, November 21st

Curbside Pick-Up: 7 a.m. to 5 p.m.- Please have all of the leaf & yard waste placed in paper biodegradable leaf bags and out by the curb on the night before the pick-up. If the yard waste is not in a paper biodegradable bag, or does not fit within the bag, it cannot be accepted.

Drop-Off: 8:00 a.m. to 12:00 p.m. at William F. Maule Park at Windlestrae off of Kenas Road
Please have all of the leaf & yard waste placed in paper biodegradable leaf bags. If the yard waste is not in a paper biodegradable bag or does not fit in your bag, it cannot be accepted.

December 4, 2015- E-News

Last 2015 Fall Leaf & Yard Waste Drop-off

Saturday, December 19th

Drop-Off: 8:00 a.m. to 12:00 p.m. at William F. Maule Park at Windlestrae off of Kenas Road
Please have all of the leaf & yard waste placed in paper biodegradable leaf bags. If the yard waste is not in a paper biodegradable bag or does not fit in your bag, it cannot be accepted.

December 17, 2015- E-News

Last 2015 Leaf & Yard Waste Drop-off- THIS SATURDAY!

Saturday, December 19th

Drop-Off: 8:00 a.m. to 12:00 p.m. at William F. Maule Park at Windlestrae off of Kenas Road
Please have all of the leaf & yard waste placed in paper biodegradable leaf bags. If the yard waste is not in a paper biodegradable bag or does not fit in your bag, it cannot be accepted.

December 31, 2015- E-News

Christmas Tree Recycling at Windlestrae!

January 2016

Drop-Off: William F. Maule Park at Windlestrae off of Kenas Road (1147 Kenas Rd, North Wales, PA 19454)

The Montgomery Township Public Works Department is accepting used Christmas trees for recycling at the William F. Maule Park at Windlestrae. The entrance to the park is located off of Kenas Road (1147 Kenas Rd, North Wales, PA 19454). There are signs to guide you to the tree recycle location.

Questions can be directed to 215-393-6900.

Stay up to speed on Montgomery Township services and events by following on Twitter @MontTwp and signing up for E-News.

The 411 on Using Deicers

When inclement weather hits, go green when trying to control ice. The key is to prevent slipping on ice with environmentally-friendly resources.

Excess salt and other deicing chemicals can pollute our streams and adversely impact drinking water supplies.

Please remember to:

- Shovel snow before it turns to ice to limit the need for deicing chemicals, like rock salt.
- Shovel snow onto permeable surfaces including grass, flower beds, and level landscaping so that as the snow melts, it will soak into the ground rather than flow directly into a nearby storm drain or stream.

If you must use deicing chemicals, consider the following:

- Avoid over application by controlling the application of chemical deicers.
- Limit chemical applications near environmentally-sensitive areas including springs, streams, ponds, wetlands, and water supply areas and sensitive landscape and vegetation.
- Sand, sawdust and cracked corn can be used as an environmentally-friendly alternative to commonly used salt products.
- Use salt substitutes that are less harmful including Calcium Chloride (CaCl₂) and Calcium Magnesium Acetate (CMA). For Calcium Chloride pellets, a handful for every 3 square yards is adequate.
- For larger areas, apply salt as a brine solution to prevent drift off of paved surfaces.
- After snow-melt, sweep up residues, including sand, to prevent it from washing into storm drains and streams.

January 15, 2016- E-News

Leaf & Yard Waste Drop-off TOMORROW!

Saturday, January 16

Drop-Off: 8:00 a.m. to 12:00 p.m. at William F. Maule Park at Windlestrae off of Kenas Road
Please have all of the leaf & yard waste placed in paper biodegradable leaf bags. If the yard waste is not in a paper biodegradable bag or does not fit in your bag, it cannot be accepted.

Still Time To Recycle Your Christmas Tree!

January 2016

Drop-Off: William F. Maule Park at Windlestrae off of Kenas Road (1147 Kenas Rd, North Wales, PA 19454)

The Montgomery Township Public Works Department is accepting used Christmas trees through the month of January for recycling at the William F. Maule Park at Windlestrae. The entrance to the park is located off of Kenas Road (1147 Kenas Rd, North Wales, PA 19454).

There are signs to guide you to the tree recycle location.

Questions can be directed to 215-393-6900.

Stay up to speed on Montgomery Township services and events by following on Twitter @MontTwp and signing up for E-News.

January 29, 2016- E-News

Next Leaf & Yard Waste Drop-off

Saturday, February 20

Drop-Off: 8:00 a.m. to 12:00 p.m. at William F. Maule Park at Windlestrae off of Kenas Road

Please have all of the leaf & yard waste placed in paper biodegradable leaf bags. If the yard waste is not in a paper biodegradable bag or does not fit in your bag, it cannot be accepted.

February 12, 2016- E-News

Next Leaf & Yard Waste Drop-off

Saturday, February 20

Drop-Off: 8:00 a.m. to 12:00 p.m. at William F. Maule Park at Windlestrae off of Kenas Road

Please have all of the leaf & yard waste placed in paper biodegradable leaf bags. If the yard waste is not in a paper biodegradable bag or does not fit in your bag, it cannot be accepted.

February 26, 2016- E-News

Electronic Recycling Event at Mont Twp Parking Lot!

Montgomery Township is excited to offer residents the opportunity to responsibly recycle obsolete electronics. This service is available to all Township residents. Please, no businesses.

DATE: Saturday, April 23rd

TIME: 9:00 a.m. to 1:00 p.m.

LOCATION: Montgomery Township Administration Building Parking Lot (1001 Stump Road, Montgomeryville, PA 18936)

ACCEPTED ITEMS INCLUDE: Laptops, Dehumidifiers, Peripherals, Computers, Typewriters, Mice, Telephones, Small Appliances, Microwaves, Fax Machines, Cameras, Keyboards, Cell Phones, Printers, Calculators, and Air Conditioners.

There will be a \$20 fee per TV or Computer Monitor and a \$50 fee per Projection or Wooden Console TV, cash or check only!

All other items are FREE!

[Click here for more information.](#)

2016 Montgomery County Recycling Events

Montgomery County holds household hazardous waste collections, tire collections, and paper shredding events throughout the spring, summer, and fall.

[Please click here to view dates, locations, and recycling information.](#)

Questions can be directed to Montgomery County at 610-278-3618.

Next Leaf & Yard Waste Drop-off

Saturday, March 19

Drop-Off: 8:00 a.m. to 12:00 p.m. at William F. Maule Park at Windlestrae off of Kenas Road

Please have all of the leaf & yard waste placed in paper biodegradable leaf bags. If the yard waste is not in a paper biodegradable bag or does not fit in your bag, it cannot be accepted.

[Please click here to view all 2016 leaf drop-off dates.](#)

HOW TO HANDLE PET WASTE

The Delaware Estuary reminds us that when your pet goes on the lawn, it doesn't just go on the lawn.

Here are some things you can do to minimize pollutants in our waterways and practice safe stormwater management:

1. Scoop up pet waste. As long as the droppings are not mixed with litter or other materials, flush it down the toilet. This is best because a sewage treatment plant or your septic system treats the pet waste.
2. Bag your pet's waste and put it in the trashcan.
3. Never put pet waste into the storm drain.
4. If your community does not regulate pet waste (e.g. "scooper" law), try to make it a priority of your local governing body.
5. Encourage your neighborhood to provide pet waste stations for collection and disposal of waste. Check to see if the parks in your neighborhood have them.

March 4, 2016- E-News

Electronic Recycling Event at Mont Twp Parking Lot!

Montgomery Township is excited to offer residents the opportunity to responsibly recycle obsolete electronics. This service is available to all Township residents. Please, no businesses.

DATE: Saturday, April 23rd

TIME: 9:00 a.m. to 1:00 p.m.

LOCATION: Montgomery Township Administration Building Parking Lot (1001 Stump Road, Montgomeryville, PA 18936)

ACCEPTED ITEMS INCLUDE: Laptops, Dehumidifiers, Peripherals, Computers, Typewriters, Mice, Telephones, Small Appliances, Microwaves, Fax Machines, Cameras, Keyboards, Cell Phones, Printers, Calculators, and Air Conditioners.

There will be a \$20 fee per TV or Computer Monitor and a \$50 fee per Projection or Wooden Console TV, cash or check only!

All other items are FREE!

[Click here for more information.](#)

2016 Montgomery County Recycling Events

Montgomery County holds household hazardous waste collections, tire collections, and paper shredding events throughout the spring, summer, and fall.

Please click here to view dates, locations, and recycling information. Questions can be directed to Montgomery County at 610-278-3618.

Next Leaf & Yard Waste Drop-off

Saturday, March 19

Drop-Off: 8:00 a.m. to 12:00 p.m. at William F. Maule Park at Windlestrae off of Kenas Road

Please have all of the leaf & yard waste placed in paper biodegradable leaf bags. If the yard waste is not in a paper biodegradable bag or does not fit in your bag, it cannot be accepted.

Please click here to view all 2016 leaf drop-off dates.

March 18, 2016- E-News

Next Leaf & Yard Waste Drop-off- TOMORROW!

Saturday, March 19

Drop-Off: 8:00 a.m. to 12:00 p.m. at William F. Maule Park at Windlestrae off of Kenas Road

Please have all of the leaf & yard waste placed in paper biodegradable leaf bags. If the yard waste is not in a paper biodegradable bag or does not fit in your bag, it cannot be accepted.

Please click here to view all 2016 leaf drop-off dates.

Electronic Recycling Event at Mont Twp Parking Lot!

Montgomery Township is excited to offer residents the opportunity to responsibly recycle obsolete electronics.

This service is available to all Township residents. Please, no businesses.

DATE: Saturday, April 23rd

TIME: 9:00 a.m. to 1:00 p.m.

LOCATION: Montgomery Township Administration Building Parking Lot (1001 Stump Road, Montgomeryville, PA 18936)

ACCEPTED ITEMS INCLUDE: Laptops, Dehumidifiers, Peripherals, Computers, Typewriters, Mice, Telephones, Small Appliances, Microwaves, Fax Machines, Cameras, Keyboards, Cell Phones, Printers, Calculators, and Air Conditioners.

There will be a \$20 fee per TV or Computer Monitor and a \$50 fee per Projection or Wooden Console TV, cash or check only!

All other items are FREE!

[Click here for more information.](#)

HOW TO HANDLE PET WASTE

The Delaware Estuary reminds us that when your pet goes on the lawn, it doesn't just go on the lawn.

Here are some things you can do to minimize pollutants in our waterways and practice safe stormwater management:

1. Scoop up pet waste. As long as the droppings are not mixed with litter or other materials, flush it down the toilet. This is best because a sewage treatment plant or your septic system treats the pet waste.
2. Bag your pet's waste and put it in the trashcan.
3. Never put pet waste into the storm drain.
4. If your community does not regulate pet waste (e.g. "scooper" law), try to make it a priority of your local governing body.
5. Encourage your neighborhood to provide pet waste stations for collection and disposal of waste. Check to see if the parks in your neighborhood have them.

MONTGOMERY TOWNSHIP *Community Guide*

Established 1714

MONTGOMERY TOWNSHIP, PA

Summer 2014

300

ANNIVERSARY

1714

2014

A Milestone
Celebration

INSIDE THIS ISSUE

| | | | | | |
|--|---|-----------------------------------|---|---|---------------|
| The Montgomery Township Board of Supervisors | 1 | Township History | 5 | COMMUNITY MAP | center spread |
| Township Contact Information | 1 | Coming Soon! | 5 | Limit Stormwater Pollution | 12 |
| Federal, State, & County Government | 1 | Highway Safety Unit | 5 | Local Library Information & Bookmobile Schedule | 12 |
| MONTGOMERY TOWNSHIP'S 300th ANNIVERSARY | 2 | Community Services & Events | 6 | Leaf and Yard Waste Collection Program | 13 |
| Fire Department Safety Update | 3 | Local Sports Organizations | 8 | Tax Collector/Earned Income Tax/LST | 13 |
| Use This App to Recycle! | 3 | Stay on Top of the News | 8 | Property Maintenance & Permits | 14 |
| Township Office Information | 4 | Frequently Asked Questions | 8 | Committees & Public Meeting Schedule | 15 |
| | | Park Descriptions | 9 | | |

Visit us at www.montgomerytwp.org

MONTGOMERY TOWNSHIP *Community Guide*

MONTGOMERY TOWNSHIP, PA

300

ANNIVERSARY

1714

2014

A Milestone
Celebration

INSIDE THIS ISSUE

| | |
|--|-----|
| COMMUNITY DAY, September 20 Celebrating 300 Years | 1 |
| The Montgomery Township Board of Supervisors | 2 |
| Township Contact Information | 2 |
| Federal, State, & County Government | 2 |
| Recreation and Community Center | 3 |
| Police Department | 3-4 |

| | |
|---|---------------|
| Fire Department: National Preparedness Month | 4 |
| Township Office Information | 5 |
| Township History | 6 |
| Community Services & Events | 8 |
| Stay on Top of the News | 9 |
| Frequently Asked Questions | 9 |
| Local Sports Organizations | 9 |
| COMMUNITY MAP | center spread |

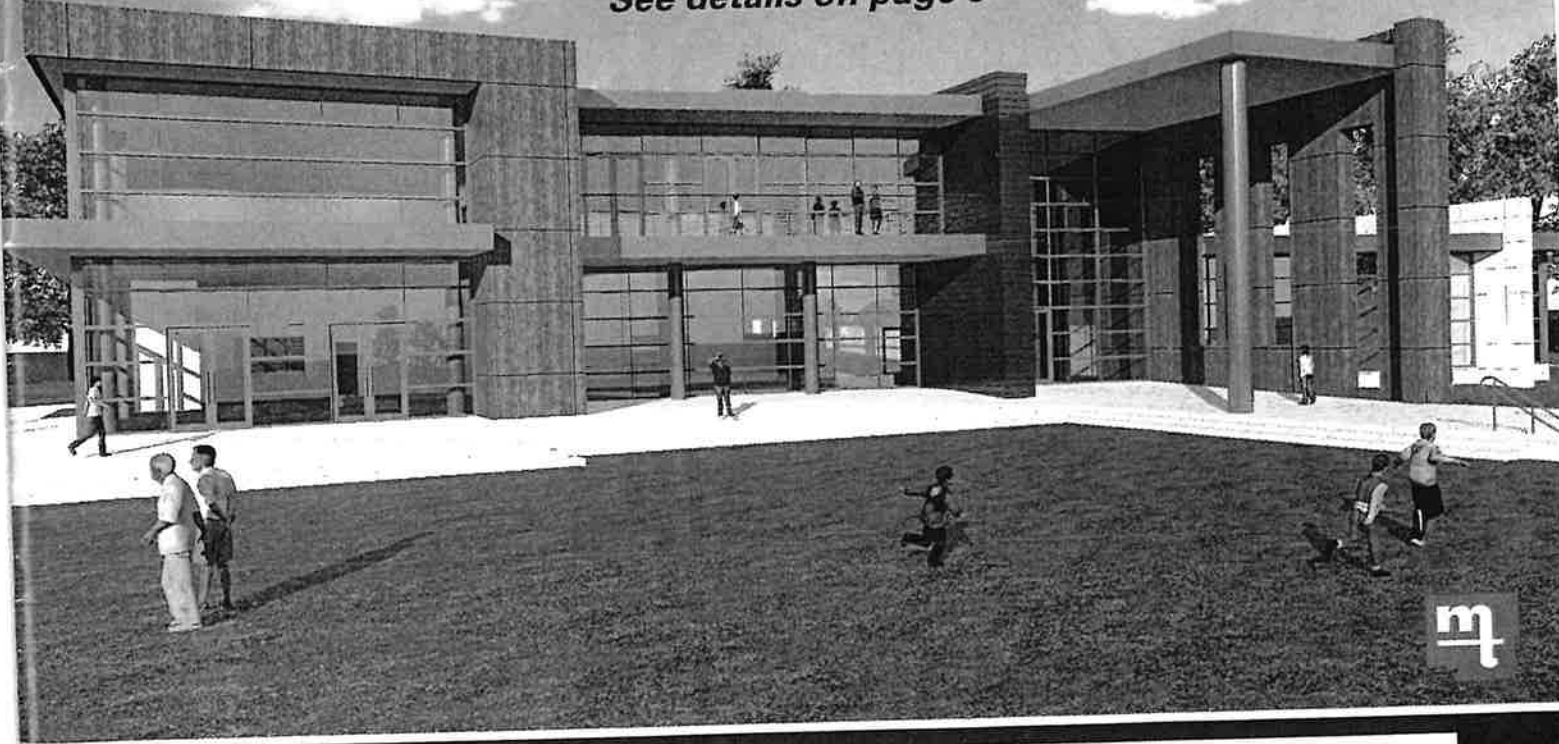
| | |
|--|----|
| Property Maintenance & Permits | 12 |
| Park Descriptions | 13 |
| Limit Stormwater Pollution | 14 |
| Local Library Information & Bookmobile Schedule | 14 |
| Use This App to Recycle! | 14 |
| Leaf and Yard Waste Collection Program | 15 |
| Tax Collector/Earned Income Tax/LST | 15 |
| Committees & Public Meeting Schedule | 16 |

Visit us at www.montgomerytwp.org

MONTGOMERY TOWNSHIP *Community Guide*

Future Recreation & Community Center

See details on page 3



INSIDE THIS ISSUE

| | | | | | |
|--|-----|--------------------------------------|---------------|---|----|
| The Montgomery Township Board of Supervisors | 2 | Thank you to the Sponsors | 10 | Limit Stormwater Pollution | 16 |
| Township Contact Information | 2 | COMMUNITY MAP | center spread | Reporting Township Roads & Street Light Issues | 16 |
| Recreation and Community Center | 3-4 | Community Services & Events | 13 | Local Library Information & Bookmobile Schedule | 16 |
| Park Descriptions | 5 | Online Payments | 13 | Leaf and Yard Waste Collection Program | 17 |
| Police Department | 6 | Montgomery Township E-News | 13 | Know Your Voting District | 17 |
| Fire Department Safety Information | 7 | Who Do I Call If? | 14 | Tax Collector/Earned Income Tax/LST | 17 |
| Township Office Information | 9 | Local Sports Organizations | 14 | Committees & Public Meeting Schedule | 18 |
| Timeline - Our Township Story | 10 | Find Recycling Locations | 14 | | |
| | | Property Maintenance & Permits | 15 | | |

Visit us at www.montgomerytwp.org